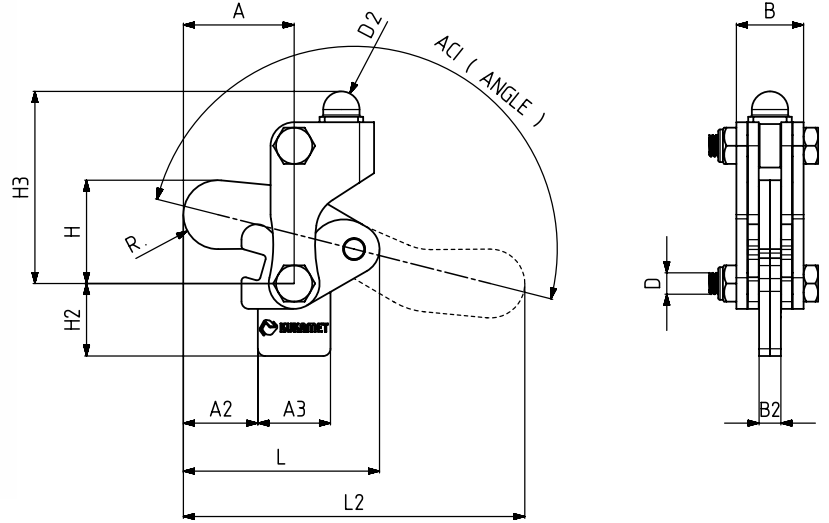




MODEL NO	F1 (N)	F1	AÇI (ANGLE) (± 5°)	AĞIRLIK (WEIGHT) (gr)
		VERİM (YIELD) (F1)		
233-2	2500	5:1	180°	200

F1 : BASKI KUVVETİ ( EXERTING FORCE ) , F1 : UYGULAMA KUVVETİ ( APPLIED FORCE )



**Ayak Tipi: Dikey Oynar Tabanlı**  
Body Mounting Base: Vertical and adjustable

MODEL NO : 233-2 KOL KAYNAKLI SAC / Welded steel arm



223

917

Sayfa/Page: 27

Sayfa/Page: 117



MODEL NO	A	A2	A3	B	B2	D	D2	H	H2	H3	L	L2	R
233-2	30,5	20,5	20	18,5	6	M6	Ø10	28,5	20	53	54	94	9,5